

PROJECT EXPERIENCE

PRAIRIE MALT LTD. – BIGGAR, SK. MALTING FACILITY

DESCRIPTION:

Facility: One of the World's premiere barley malting facilities. Some of the best barley in the world is grown within a one hundred kilometre radius of this malthouse, which has an annual capacity of 220,000 metric tonnes.

Delco Scope: Engineering and design of materials and installation specifications. Prepared approval, construction, and as-built ACAD drawings. Prepared a detailed functional design document and programmed the PLC and HMI systems. Field services and start-up assistance was also provided. Supply of CSA approved PLC panels and pre-wired custom MCC's. Operator training was included in the scope.

Technology: Two iFIX SCADA systems with Redundancy and 12 iFIX View Nodes operating with Windows XP connected via Ethernet to the following A-B PLC's: Pellet Mill PLC 5/40 with Flex i/o for House grain handling, Foster Annex PLC 5/40 with Flex i/o for additional grain handling, Flexi Malthouse #1 PLC 5/40 with Flex I/O, Flexi Malthouse #2 with Flex I/O, Main Clean PLC 5/40 with Flex I/O, Wanderhauffen Control Logix processor with Flex I/O, Main and Malt Storage Control Logix with Control Net Remote I/O and Kiln controls Control Logix 1756-L61 processor with 2 remote Control Logix racks on ControlNet running a combination of discrete, analog, thermocouple and RTD I/O for kiln temperature control and monitoring. Modbus communications between the Control Logix and the kiln burner controllers for burner status display on the Kiln view nodes.

I/O Count: 3500+



COMPLETION:

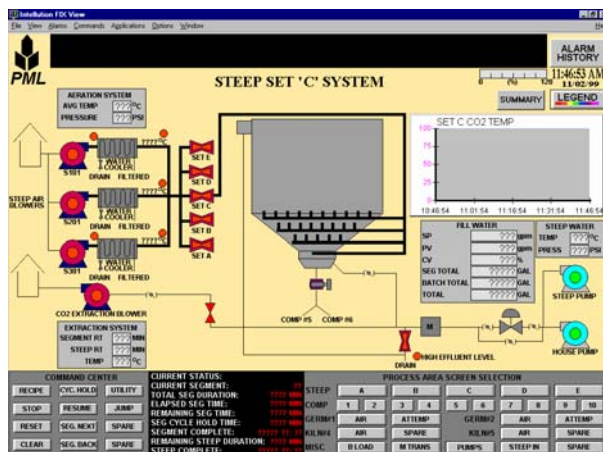
Ongoing

LOCATION:

Biggar, SK

OWNER:

Prairie Malt Ltd.



CONTACT NAMES:

Prairie Malt