

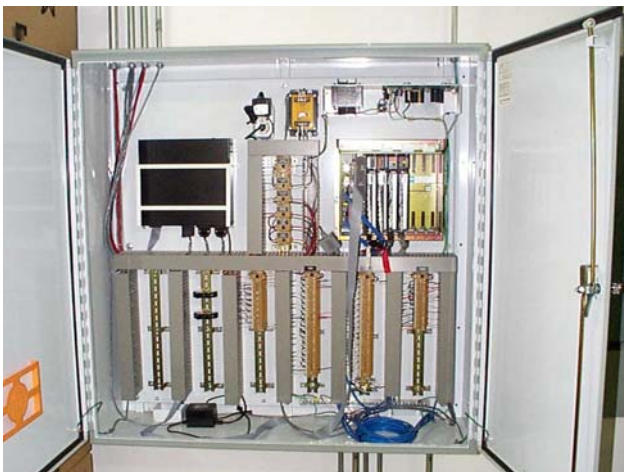
**L.F. Kristjanson Biotechnology Complex – Saskatoon, SK**

**DESCRIPTION:**

**Facility:** The L.F. Kristjanson Biotechnology Complex is a state-of-the-art custom designed greenhouse laboratory building originally constructed in 1989 to support the agriculture biotechnology sector in the Province of Saskatchewan.

Approximately 25,000 square feet in size with functions under glass occupying approximately 15,000 square feet with the remainder being offices, laboratories and service support space. The building serves a valuable purpose in supporting the ag-biotech industry and the development of a number of products most affiliated with canola, but also wheat and conifers.

**Delco Scope:** Detailed design of CSA control panels including commissioning assistance and servicing. Prepared approval, construction, and as-built ACAD drawings. Field services and start-up assistance was also provided. Operator training was included in the scope.



**COMPLETION:**

**LOCATION:** Saskatoon, SK

**OWNER:** L.F. Kristjanson