

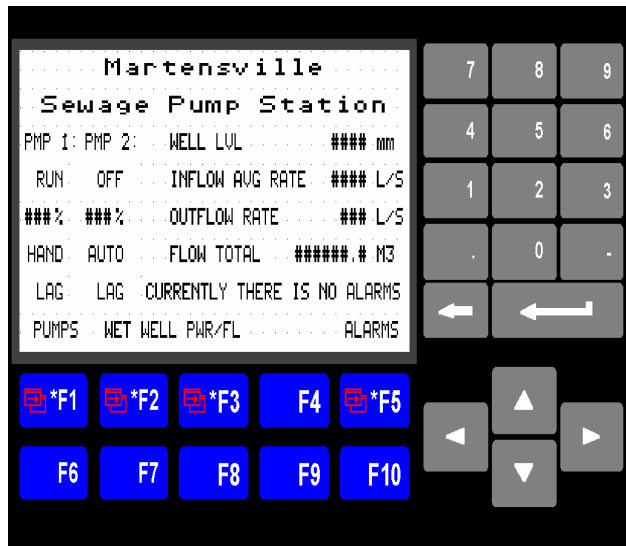
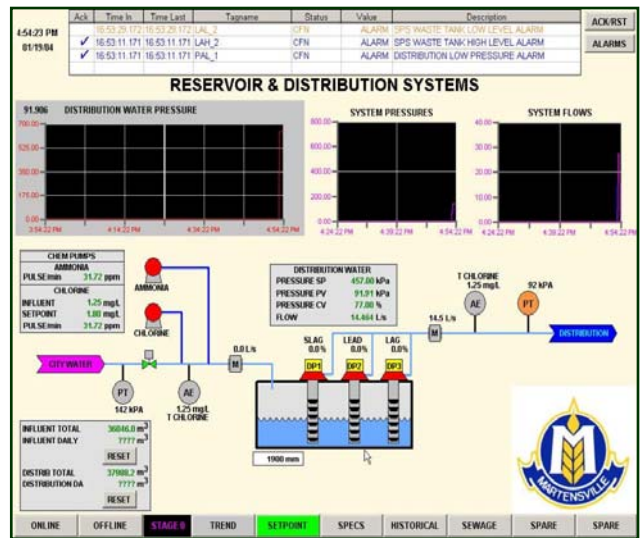
**Project Name: Town of Martensville**

Location: Martensville, Saskatchewan

1. Main Sewage Pump Station:
2. Water Distribution Pump house:
3. Sewage Pumping Station No. 3:

Owner: Town of Martensville

**Plant Facility:** Each of the main sewage pump station and sewage pumping station#3 consists of two service pumps: one of them functions as lead pump and the other as lag pump. The lead/lag pump is controlled by the wet well level. These sewage plants also have flush valve system which can be operated in Auto/Hand mode. The distribution plant consists of three distribution pumps and controlled based on water demand and distribution pressure.



**Delco Automation’s Scope of Work:** Designed, Engineered, Manufactured and Implemented PLC/Panel View/HMI based plant automation system.

**Technology:**  
**Main/Sewage Pump Station#3:** A PLC is programmed to operate service pumps VFD speed with regard to the level and flow rate of the system. The Panel View is designed for operate interface through which an operator has control over start and stop level set points for the service pumps. The various alarms are displayed on the panel view and connected to the alarm dialer.

**Distribution Pump House:** A PLC is programmed to control and operate distribution pumps based on water demand and distribution pressure using PID controller. An HMI is designed for operator interface which also gathers data for reporting system. The reporting system is designed to provide daily/ monthly reports, operator activities and alarm reports. The selected system alarms are connected to alarm dialer/bells and also displayed on HMI screen.